

GPSFox

Quick Guide

Version 1.2

The logo for LOCOSYS, featuring the word "LOCOSYS" in a white, bold, serif font, centered within a solid orange rectangular background.

© LOCOSYS Technology Inc.

Getting Started

System Requirements :

To use GPSFox on a Windows PC, you must have at least the following:

- Ø **Operating System :** Windows 2000 , Windows XP or Windows Vista
- Ø **CPU:** 500Mhz, Pentium 3
- Ø **System Memory (RAM) :** 128MB RAM
- Ø **Hard Disk :** 50MB free space
- Ø **Screen :** 800x600, "16-bit High Color" screen



Installation :

Make sure the driver for USB has been successfully installed on your host PC/Notebook, and just copy GPSFox.exe to a new empty folder on your hard disk .Create a shortcut on desktop if necessary.
(The USB driver is coming with the package in the Installation CD, or you can download the driver from our web <http://www.locosystech.com/>)

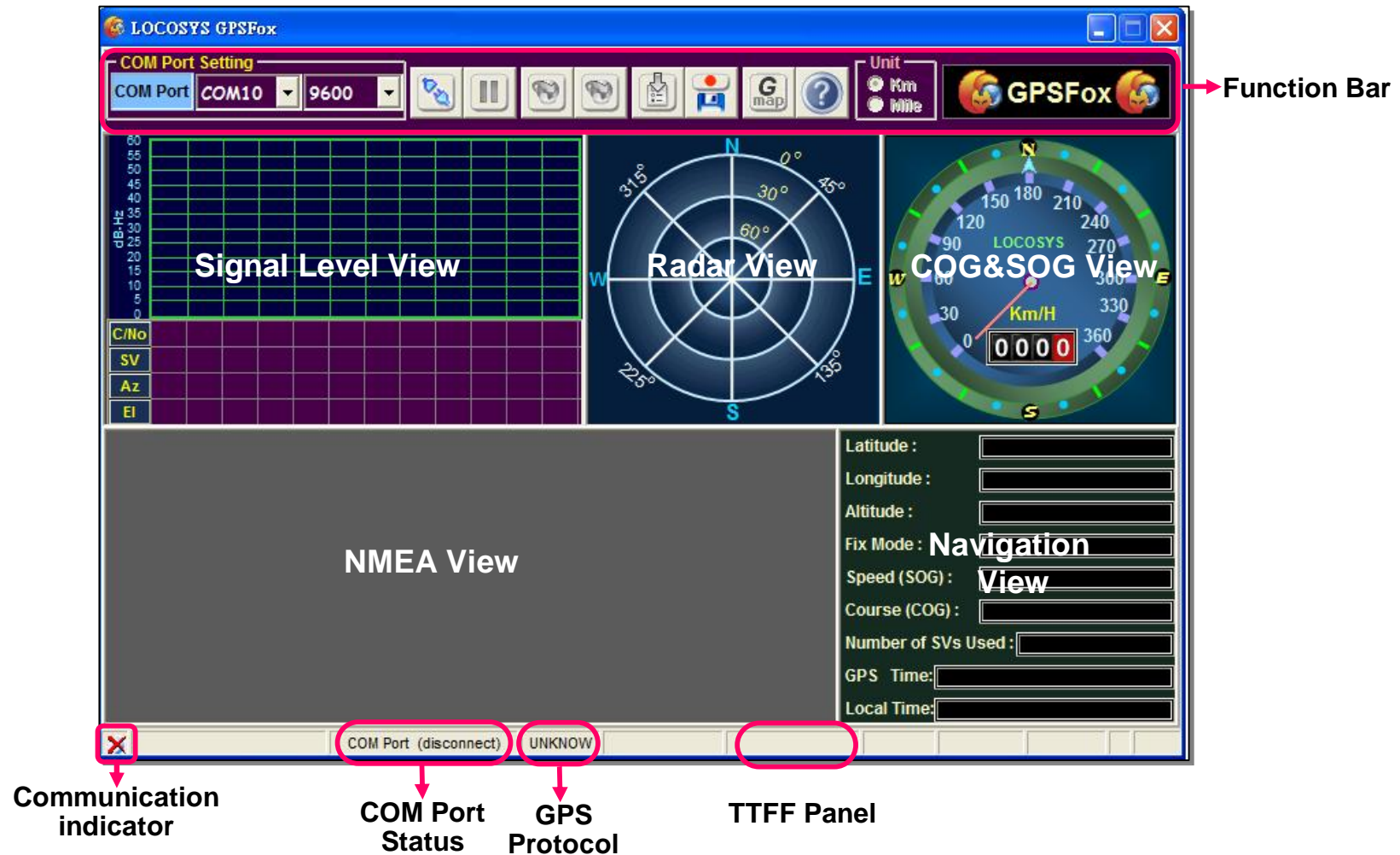
Uninstallation :

This program does not add any key to system registry. If you don't want it for whatever reason, just delete the provided files and its shortcut from your hard disk.

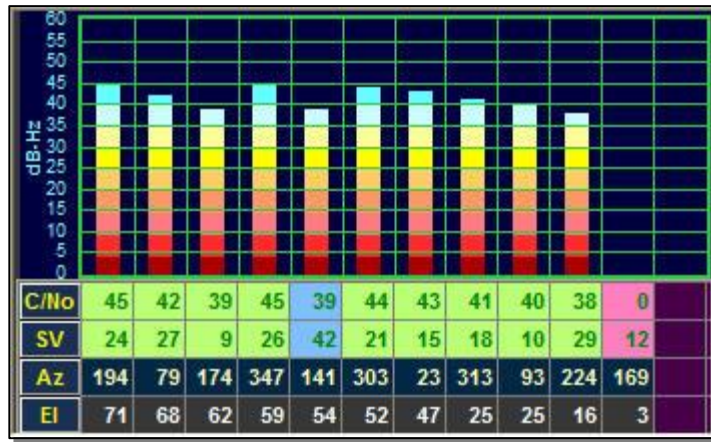
Launch GPSFox

1. Double click on the GPSFox.exe or the GPSFox's shortcut  on windows desktop.
2. Select the "COM Port" and "Baud Rate" apply to the host PC.
3. Click "Connect to GPS"  and then the NMEA output messages will display in the NMEA View.

The GPSFox is an easy-to-use utility which can display graphically specific NMEA 0183 message received from GPS or TMC receiver. There are five information areas, two function bars and some status indicators in the main form.



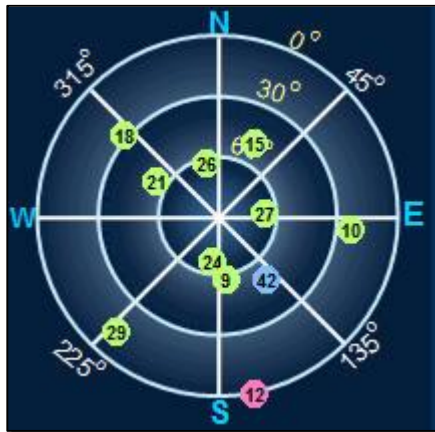
a Signal Level View



The **Signal Level View** displays the satellite number(SV), azimuth(Az), elevation(El) of tracked and available satellites in a text form. It also shows the C/No value in both text and graphical forms.

| Item | Description |
|-----------------------|----------------------------------|
| C/No | Signal level in dB-Hz |
| Satellite Number (SV) | GPS satellite ID |
| Azimuth (Az) | Satellite azimuth (in degrees) |
| Elevation (El) | Satellite elevation (in degrees) |

a Radar View



The **Radar View** displays the azimuth and elevation of tracked and available satellites in a graphical form. The color of the satellite status is:

| Color | Description |
|-------------|---------------------------------------------------------------------------|
| Light green | Satellites being used in the position solution |
| Light blue | Satellites being tracked but not used |
| Pink | Satellites that are not tracked and are not used in the position solution |

a COG&SOG View



The **COG&SOG View** displays the GPS speed and direction in a graphical form. There are two measurement systems can be shown: Metric (KM) or Imperial (Mile). You can select the unit of measurement in the Unit selection box on *Function Bar 1* by click the item of Km or Mile.



a NMEA View

```
$GPGLL,2503.7150,N,12138.7445,E,033806.000,A,D*5E
$GPGSA,A,3,24,26,21,09,18,29,27,10,15,,,1.29,1.00,0.82*09
$GPGSV,3,1,11,24,71,193,45,27,68,078,42,09,62,174,37,26,58,347,45*70
$GPGSV,3,2,11,42,54,141,38,21,52,303,44,15,47,023,43,18,25,313,41*7F
$GPGSV,3,3,11,10,25,093,40,29,15,224,37,12,04,168,*46
$GPRMC,033806.000,A,2503.7150,N,12138.7445,E,0.03,0.00,040509,,,D*62
$GPVTG,0.00,T,,M,0.03,N,0.06,K,D*3D
$GPGGA,033807.000,2503.7150,N,12138.7445,E,2,9,1.00,128.8,M,15.3,M,0000,00
$GPGLL,2503.7150,N,12138.7445,E,033807.000,A,D*5F
$GPGSA,A,3,24,26,21,09,18,29,27,10,15,,,1.29,1.00,0.82*09
$GPGSV,3,1,11,24,71,193,45,27,68,078,42,09,62,174,37,26,58,347,45*70
$GPGSV,3,2,11,42,54,141,38,21,52,303,44,15,47,023,43,18,25,314,41*78
$GPGSV,3,3,11,10,25,093,40,29,15,224,37,12,04,168,*46
$GPRMC,033807.000,A,2503.7150,N,12138.7445,E,0.01,0.00,040509,,,D*61
$GPVTG,0.00,T,,M,0.01,N,0.03,K,D*3A
```

The **NMEA View** displays the original NMEA messages received from GPS receiver. If you want to clear the content of **NMEA View**, just right-click in **NMEA View** area and click the *Clear* item on popup menu.

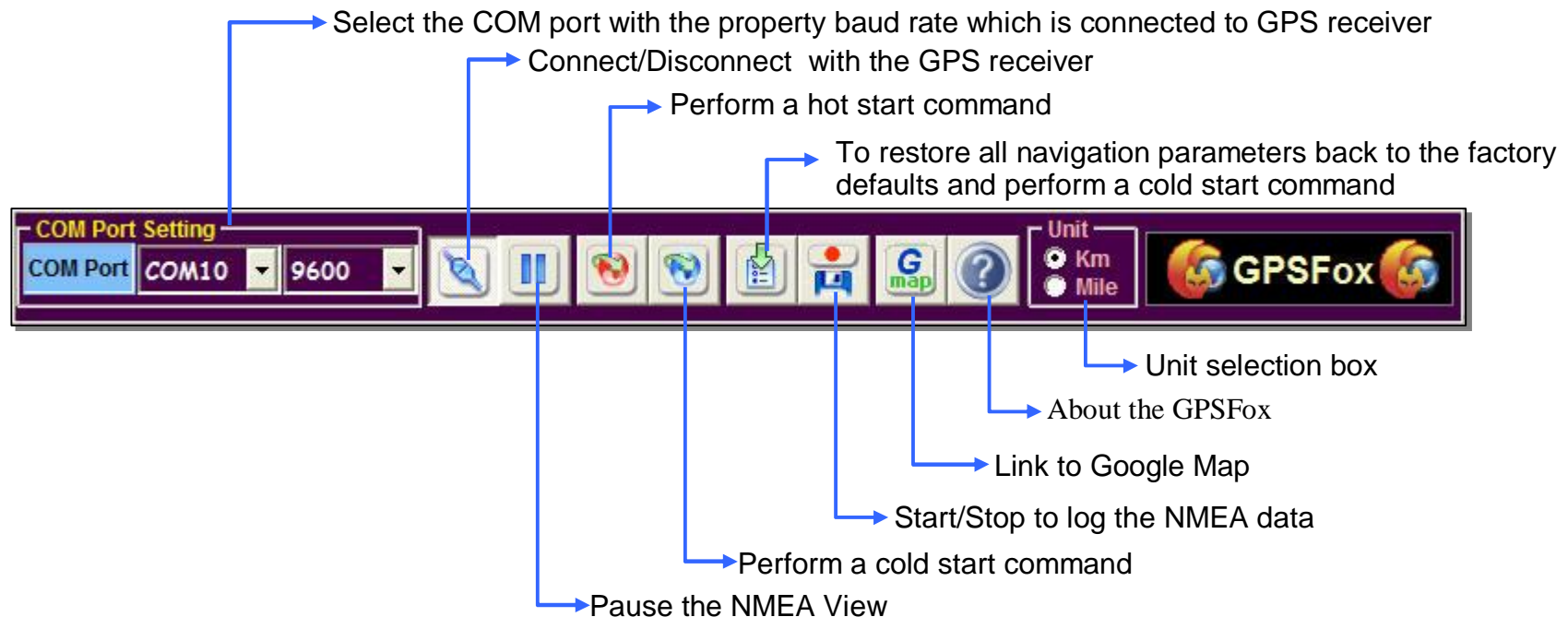
a Navigation View

| | |
|----------------------|-------------------------|
| Latitude : | N 25.061917° |
| Longitude : | E 121.645742° |
| Altitude : | 128.8 m |
| Fix Mode : | 3D |
| Speed (SOG) : | 0.0 Km/H |
| Course (COG) : | 0.0° |
| Number of SVs Used : | 9 |
| GPS Time: | 2009/05/04 03:37:59.000 |
| Local Time: | 2009/05/04 11:37:59.000 |

The **Navigation View** displays the primary navigation information, the units of measurements are determined in the Unit selection box.

| Fix Mode | Description |
|----------|-------------------|
| not Fix | Fix not available |
| 2D | 2D (<4 SVs used) |
| 3D | 3D (>3 SVs used) |

a Function Bar





About the GPSFox :



Unit selection box






Display unit in metric mode

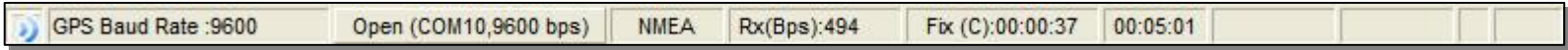


Display unit in Imperial mode



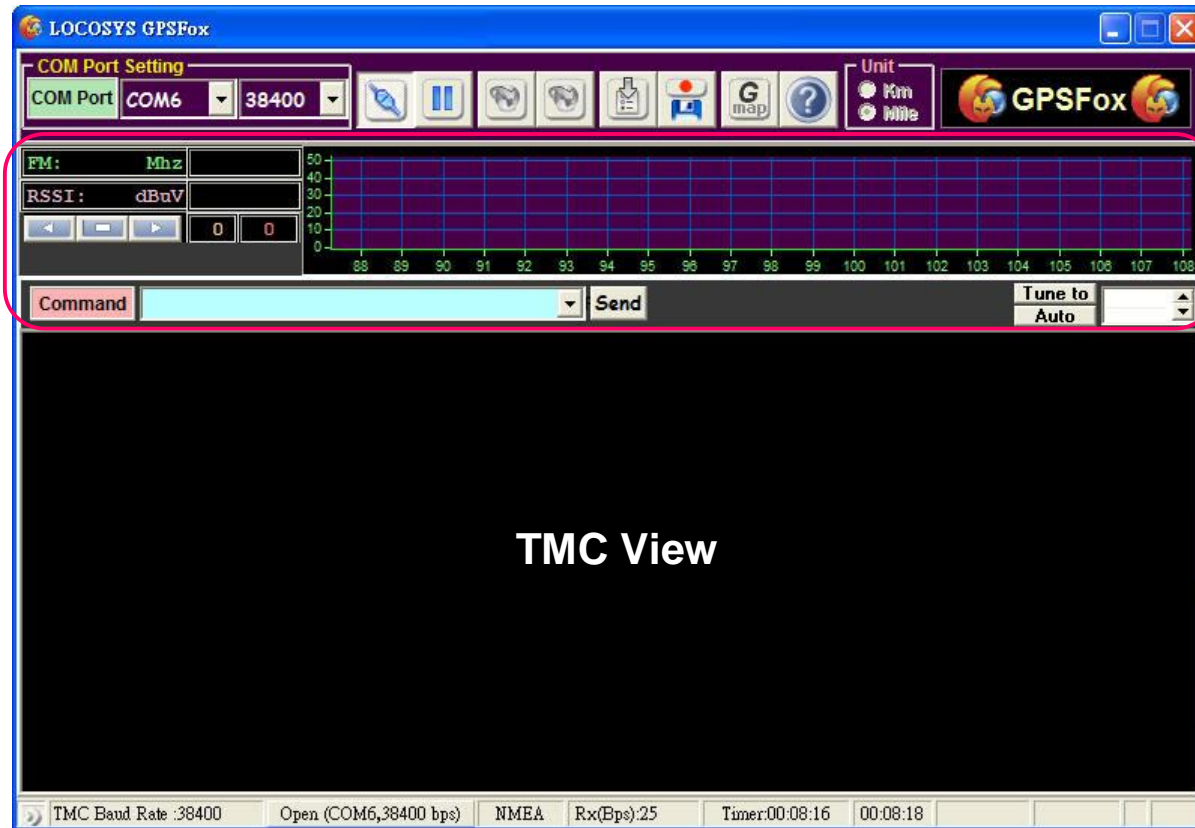
Communication indicator :

| Symbol | Description |
|-----------------------------------------------------------------------------------|-------------------------------------|
|  | COM Port disconnection |
|  | Data transmission ,COM port busy |
|  | No data transmission ,COM port idle |



If you perform a Hot/Cold Start command, the information of TTFF(Time To First Fix) will display on the TTFF panel.

In TMC mode, the main screen shows as below :



FM tuner control
and information
panel