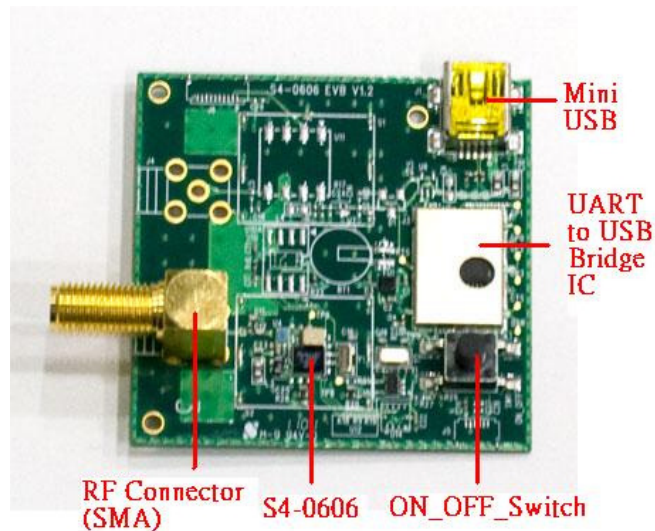


1 Introduction

S4-0606 EVB is an evaluation board for GPS receiver S4-0606; it's embedded an interface IC of UART to USB, so users can connect this EVB to the USB port of a notebook to observe GPS reception status.



2 Contents

Contents of the S4-0606 evaluation kit contain:

- S4-0606 evaluation board x 1 piece
- USB cable x 1 piece
- External GPS antenna x 1 piece



3 Install USB driver

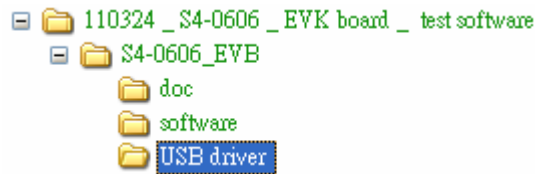


Figure 3-1, the folders for installation.

Before you start to use the S4-0606 EVB, you need to install USB driver to your notebook. Please cancel the procedure if your screen pops up a message of finding a new hardware. Install the file “S4-0606_EVB\USB Driver\PL2303_Prolific_DriverInstakker_v130.exe” shown in Figure 3-1. Finish the installation procedures, then you can see COM Port in Figure 3-2.

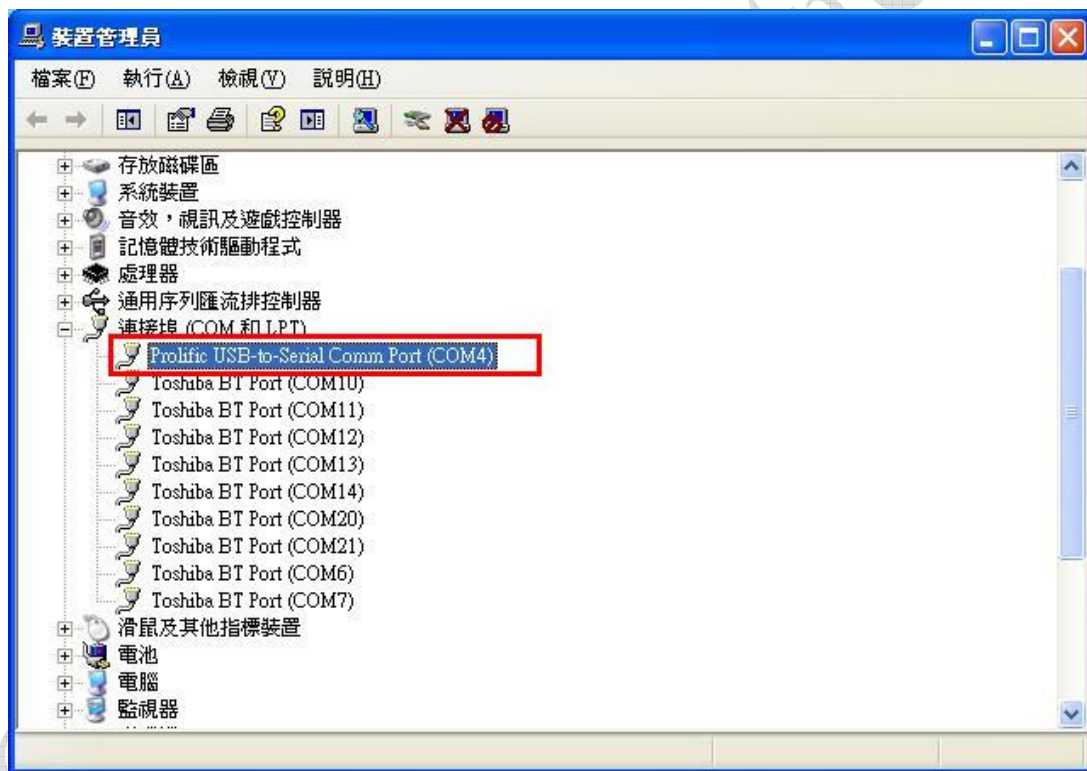


Figure 3-2, The COM Port can be seen under System Manager.

4 Software operation

Execute the file “S4-0606_EVB\software\GPSFox-V0.79x51”, and you can see GPS Fox software, as Figure 4-1.

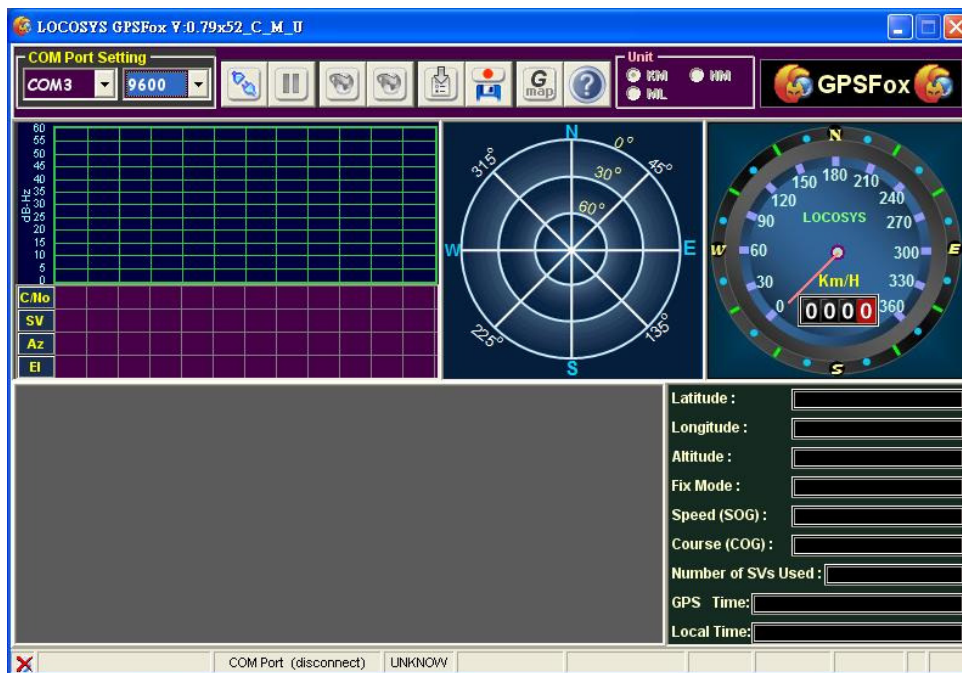


Figure 4-1 the screen shot of software GPSFox execution.

Connect the external GPS antenna to S4-0606 EVB; connect the USB cable to link the S4-0606 EVB and the notebook. You will see the screen shown as Figure 4-2 on the notebook, and COM3 is generated. (Be aware of the COM port number would vary from different notebooks)

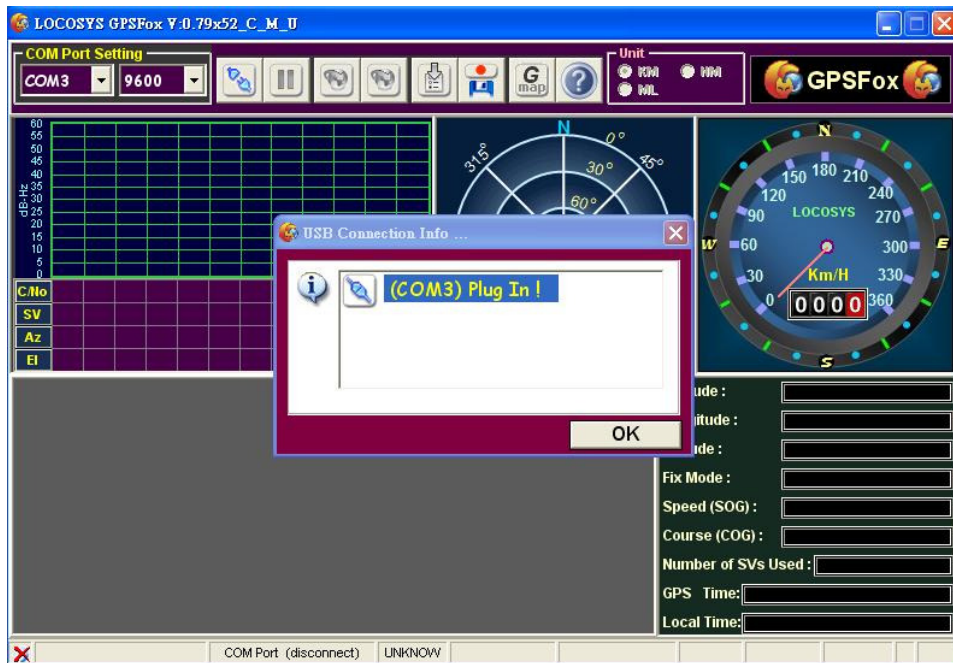


Figure 4-2, the COM port number shows up when the connection between S4-0606 EVB and notebook USB port is done.

Refer to Figure 4-3, choose COM3 and set Baud Rate as 4800bps, and push the connect button. Switch the ON_OFF Switch on the S4-0606 EVB(this is to start the S4-0606), then the GPS reception will show up.



Figure 4-3, Choose COM3, set Baud Rate as 4800 bps, push the connect button, you will see the GPS reception information.

5 Q&A of S4-0606 EVB

Q: What is the function of the ON_OFF Switch on the S4-0606 EVB?

A: This ON_OFF Switch is to on/off S4-0606 module. When the power is on in the beginning, S4-0606 is in hibernate mode. In order to wake it up, you need to push the switch one time. Push the switch again, it will go to hibernate mode.

Q: How to know if ON_OFF Switch is on or off?

A: When S4-0606 is on, you can see "\$PSRF150,1*3E" in the NMEA window, shown in Figure 5-1.

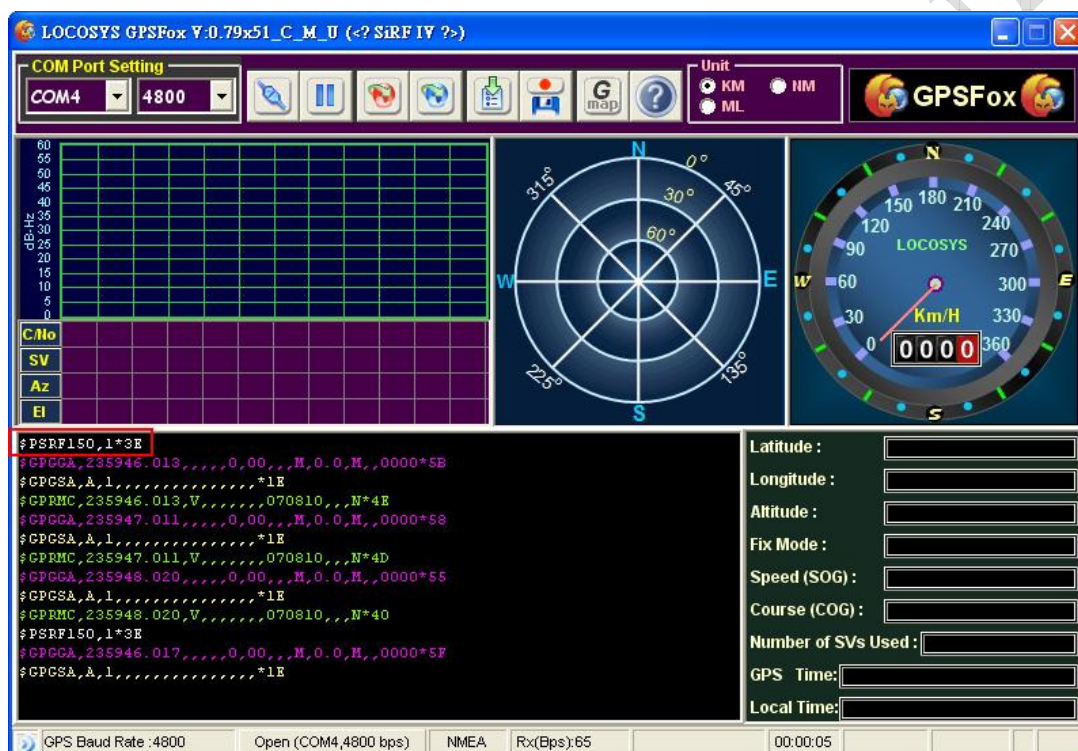


Figure 5-1

A: When S4-0606 is off (hibernate mode), you can see “\$PSRF 150, 0*3F” in the NMEA window, shown in Figure 5-2.

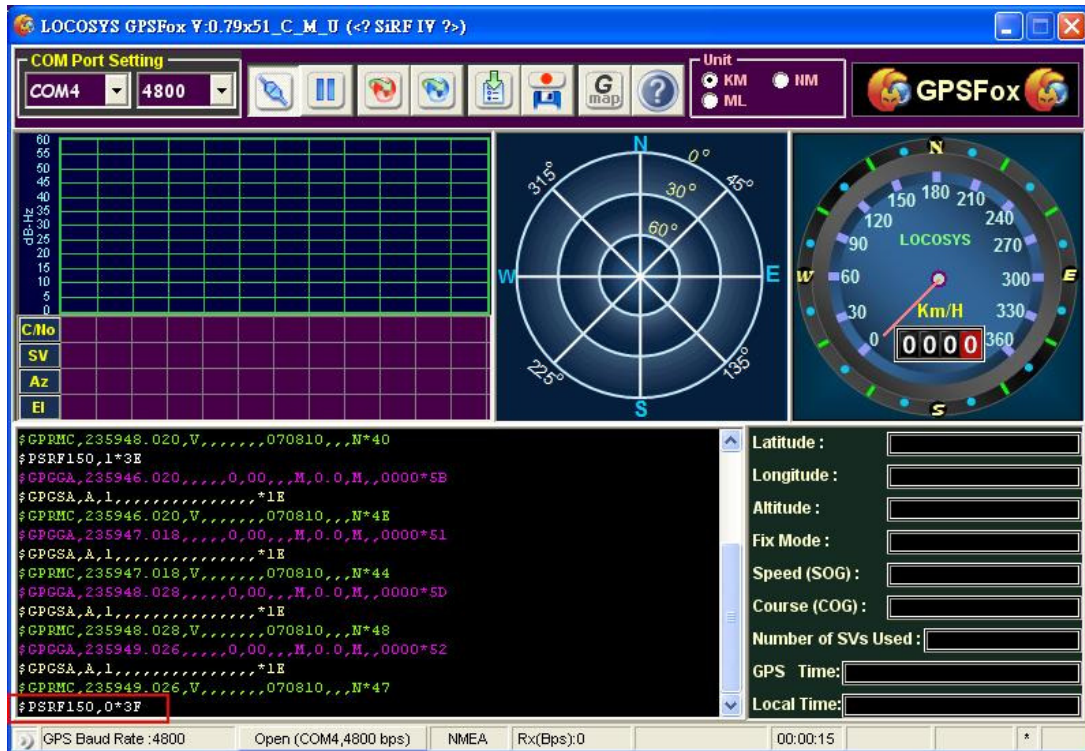


Figure 5-2